



4 & 8 INPUT

4 & 8 Input Addressable Module

MADE IN PORTUGAL - EU

GLOBAL FIRE EQUIPMENT S.A.

Sítio dos Barrabés, Armazém Nave Y, Caixa Postal 908-Z, 8150-016 São Brás de Alportel - PORTUGAL

Tel: +351 289 896 560 • Sales: sales@globalfire.pt • Technical Support: techs@globalfire.pt • www.globalfire.pt

TECHNICAL SPECIFICATIONS

SUPPLY VOLTAGE	Loop Powered - 17 V to 30 V DC
LOOP CURRENT - QUIESCENT (IQ)	4 Input 2.6 mA - 8 Input 3.2 mA
LOOP CURRENT - ALARM	$I_q + 0.9$ mA for each I/P in alarm
LOOP CURRENT - SHORT-CIRCUIT	$I_q + 0.9$ mA for each I/P in short-circuit
LOOP CURRENT - OPEN CIRCUIT	$I_q + 0.5$ mA for each I/P in open circuit
MAX. CABLE SIZE	2.5 mm ²
COLOUR / CASE MATERIAL	White & Transparent / ABS
OPERATING TEMPERATURE	-10°C to 50°C
MAX. HUMIDITY	95% RH Non-Condensing
DIMENSIONS	150 (W) x 90 (L) x 32 (H) mm
WEIGHT	4 Input 205 g - 8 Input 215 g inc. packaging

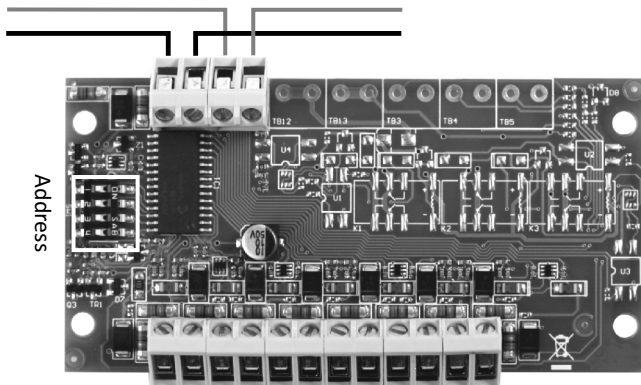
ORDER CODE

4 INPUT	4 INPUT ADDRESSABLE MODULE
8 INPUT	8 INPUT ADDRESSABLE MODULE

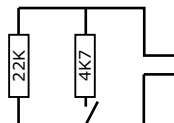
CONNECTIONS

Device is polarized

Loop IN Loop OUT



11 12 0V 0V 13 14 15 16 0V 0V 17 18



INPUT

Monitored for Open and Short-Circuit - Can be driven by Conventional Panel's Zone Repeater Outputs. Each I/P should be fitted with 22 K Ohm end-of-line resistor. Fire Condition set with 4.7 K Ohms resistor in parallel with e.o.l. resistor.

Fault

Short circuit - < 2K2
 Open Circuit - > 47K
Normal - 8K2 to 47K
Fire - 2K2 to 8K2

Input Resistance values

- END OF LINE MONITORING RESISTOR 22K.
 - ALARM RESISTOR (4K7) IN SERIES WITH NORMALLY OPEN CONTACT.

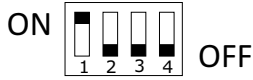
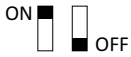
REPORTING DETAILS

In order to indicate the status of the module's working condition, the following LEDs are provided:

Input Status: An I/P status Red LED is provided for the input. This Red LED will be illuminated continuously whenever there is a FIRE condition present at the input terminals. The analogue value reported by the module in this state is 64.

Fault: This Yellow LED will be activated whenever there is either an open or short circuit fault on that particular input. If there is an open or short circuit condition, the analogue value reported to the addressable panel is 4.

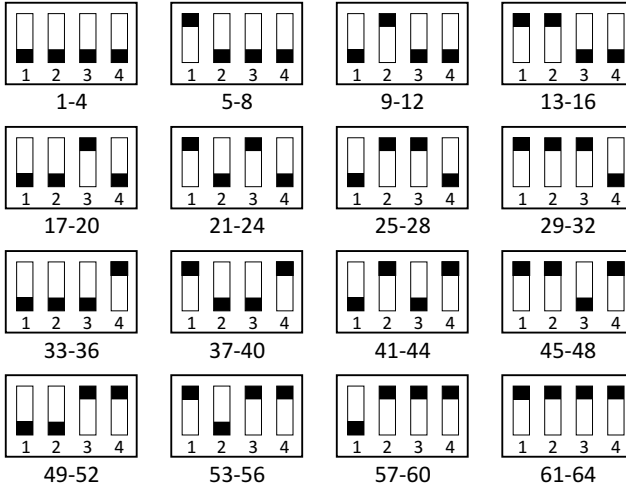
D.I.L. SWITCHES CONFIGURATION



Switches 1-4
used to configure the module's address

Address Switches binary weights
 1 ON =1
 2 ON =2
 3 ON =4
 4 ON =8

ADDRESS SETTINGS - 4 INPUT



ADDRESS SETTINGS - 8 INPUT

